

About

The YAACARS Interface will let you load fuel and payload directly in X-Plane and in addition it will show you the connection- and tracking state of the YAACARS client!

Compatibility

This tool will work for X-Plane only! Sorry to the FSX and P3D users ...

Download

<https://www.ftw-sim.de/client-downloads/>

History

- 2.0 changed interface to work with the yaacars.lua - instead of the obsolete yaacars datarefs
- 1.3 warning when flight is not started now triggers at 10kts already and when still on ground
- 1.2 / 1.2.1 added Python script to create needed datarefs as an alternative to the xlua plugin (for XP10 and Linux)
- 1.1 "tweaked" the xlua plugin to work with xlua-enabled planes
- 1.0 initial release

Installation

DataRef-Helper

~~The lua script needs DataRefs to communicate with YAACARS. Sadly, FlyWithLua is not able to create DataRefs on it's own, so we need a helper to create the DataRefs: * on XP11 you can use the xlua plugin by extracting the "YAACARS_DataRefs" folder to your Resources/Plugins folder. * on XP10/9 or any other incompatible systems there's a python-script "Plugins/PythonScripts/Pl_yaacars-datarefs.py" for the [X-Plane Python Interface](#), that is also able to create the datarefs.~~

No longer needed with Version 2.0! (yeah!)

lua script

- Install [FlyWithLua for XP11](#) or [FlyWithLua for XP10/9](#)
- Extract the "YAACARS-Interface.lua" folder to your Resources/Plugins/FlyWithLua/Scripts folder.

Make sure to EDIT the following line of the script to adapt the local path

to the yaacars.lua file!

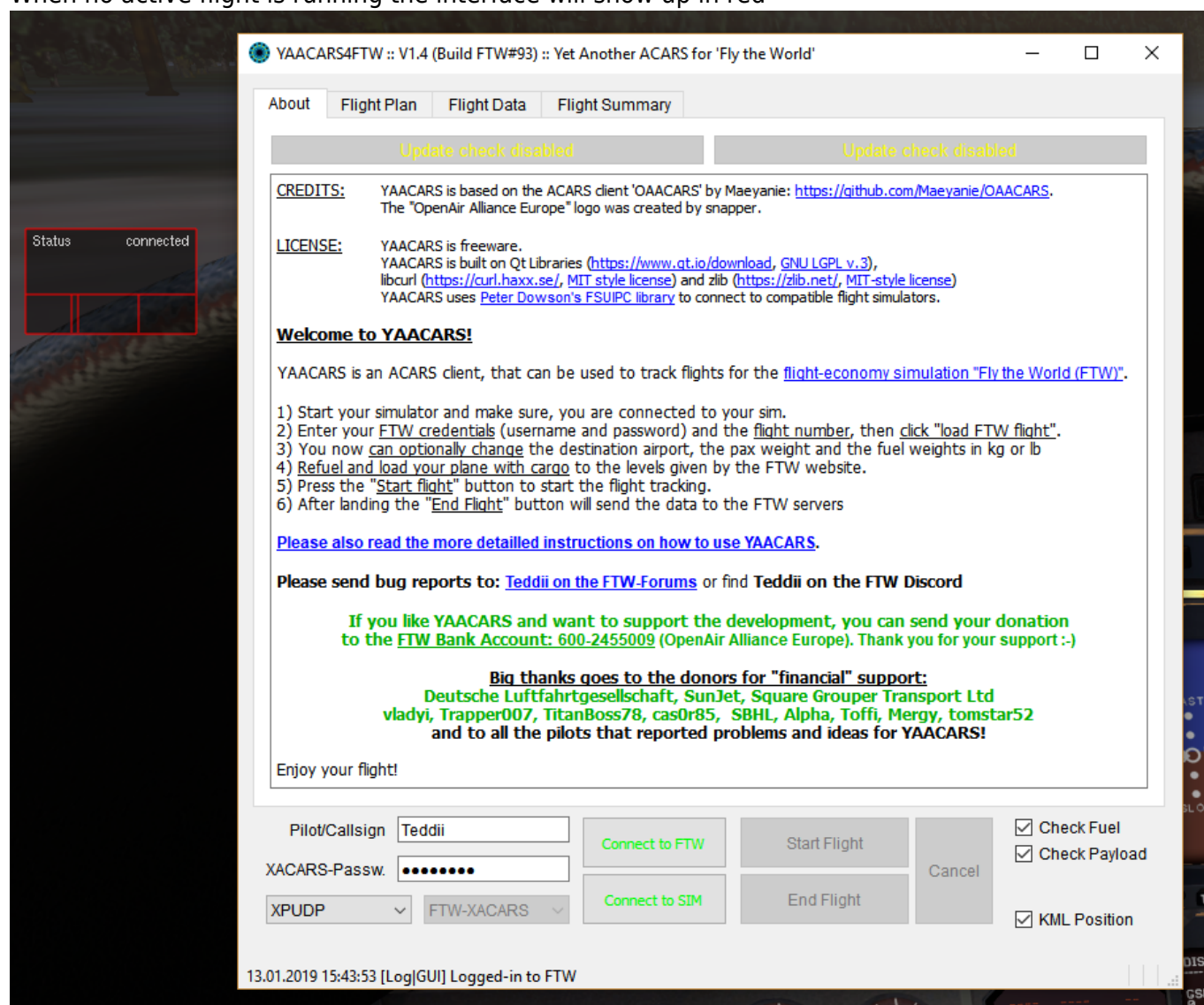
```
local yaacarsPath="C:/Users/[YOUR_PROFILE]/Documents/YAACARS";
```

The path has to point to your local YAACARS document folder, which is
C:/Users/[YOUR_PROFILE]/Documents/YAACARS (Linux: /home/<yaacars-run-user>/Documents/YAACARS/yaacars.lua)

Screenshots

connected

When no active flight is running the interface will show up in red



FTW Fuel and Payload weights

When you enter fuel and payload weights the client receives the values and unlocks the "load"

YAACARS4FTW :: V1.4 (Build FTW#93) :: Yet Another ACARS for 'Fly the World'

About Flight Plan Flight Data Flight Summary

Flight No ☒ Check for Airline Flight PAX -> Total (lbs) (kg)

CA9472 Get Flight METAR SimBrief 7 1080 490

Aircraft Name Tail Number Cargo (lbs) (kg)

Cessna Citation II N-A8079 218 99

Dep. ICAO Arr. ICAO Alt. ICAO Flight Type Fuel (lbs) (kg) Payload (lbs) (kg)

WABF RPW RPW IFR 4850 2200 1298 589

Route: 5206 2361 1160 526

Debug / Log: ☐ Debug ☒ Log ☒ Warn ☒ Err

13.01.2019 15:43:53 [dbg|GUI] Entering UI Init ...
 13.01.2019 15:43:53 [Log|GUI] Logging to yaacars.log started for YAACARS4FTW :: V1.4 (Build FTW#93)
 13.01.2019 15:43:53 [Log|GUI] Init done - ready ...
 13.01.2019 15:43:53 [Wrn|GUI] Update check is disabled
 13.01.2019 15:43:53 [Log|GUI] Logging in ...
 13.01.2019 15:43:53 [Log|GUI] Logged-in to FTW
 13.01.2019 15:44:38 [Log|GUI] Flightplan loaded

Pilot/Callsign Teddii Connect to FTW Start Flight

XACARS-Passw. Connect to SIM End Flight Cancel

XPUDP FTW-XACARS ☒ Check Fuel ☒ Check Payload ☒ KML Position

13.01.2019 15:44:38 [Log|GUI] Flightplan loaded

Load Fuel and Payload weights

Status	connected
Fuel (kg)	2200
Payload (kg)	589
	<div style="display: flex; justify-content: space-between;"> <div>Load Fuel</div> <div>Load Payload</div> </div>

YAACARS4FTW :: V1.4 (Build FTW#93) :: Yet Another ACARS for 'Fly the World'

About
Flight Plan
Flight Data
Flight Summary

Flight No ☐ Check for Airline Flight

PAX

-> Total (lbs) (kg)

1080

490

Aircraft Name

Tail Number

Cargo (lbs) (kg)

218

99

Dep. ICAO

Arr. ICAO

Alt. ICAO

Flight Type

Fuel (lbs) (kg)

4850

2200

Payload (lbs) (kg)

1298

589

Route: 4846 2198 1299 589

Debug / Log: ☐ Debug ☒ Log ☒ Warn ☒ Err

```

13.01.2019 15:43:53 [dbg|GUI] Entering UI Init ...
13.01.2019 15:43:53 [Log|GUI] Logging to yaacars.log started for YAACARS4FTW :: V1.4 (Build FTW#93)
13.01.2019 15:43:53 [Log|GUI] Init done - ready ...
13.01.2019 15:43:53 [Wm|GUI] Update check is disabled
13.01.2019 15:43:53 [Log|GUI] Logging in ...
13.01.2019 15:43:53 [Log|GUI] Logged-in to FTW
13.01.2019 15:44:38 [Log|GUI] Flightplan loaded

```

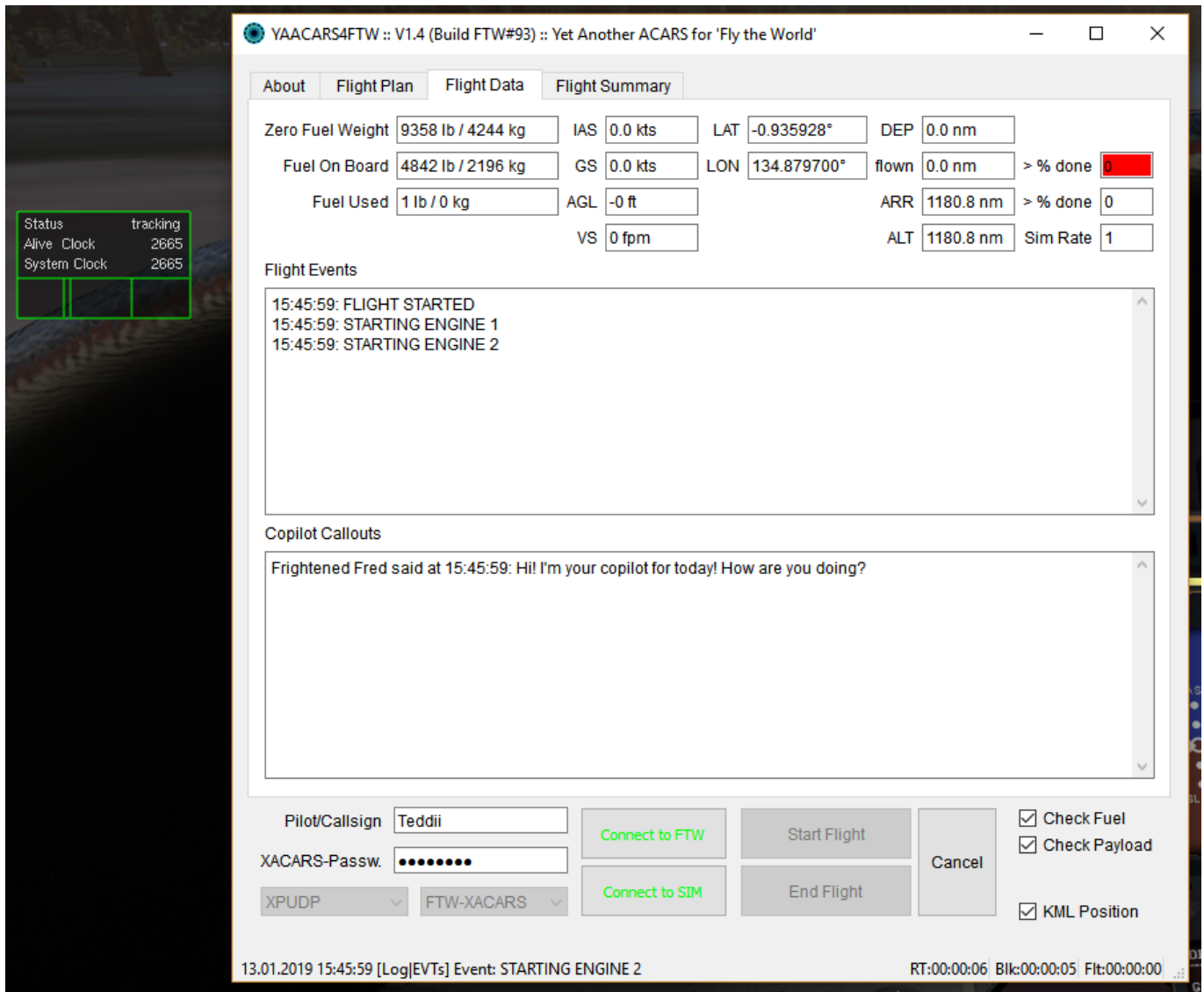
Pilot/Callsign
XACARS-Passw.
XPUDP

☒ Check Fuel
☒ Check Payload
☒ KML Position

13.01.2019 15:44:38 [Log|GUI] Flightplan loaded

Start Flight Tracking

When the flight tracking in YAACARS is started, the interface will immediately hide. You can show it



Tracking abort or Client crash

The interface will show up in flight:

- when the YAACARS client abort the flight (refuelling, for example) - interface will turn RED
- the alive signal from the YAACARS client got lost or out of sync - interface will turn YELLOW

There might be still an error within the interface code, so check back to the YAACARS client to see it's state!

From:
<https://wiki.ftw-sim.de/> - FTWiki - das FTW Wiki

Permanent link:
<https://wiki.ftw-sim.de/doku.php?id=yaacars:yaacars-interface>

Last update: **2022/02/12 11:36**



