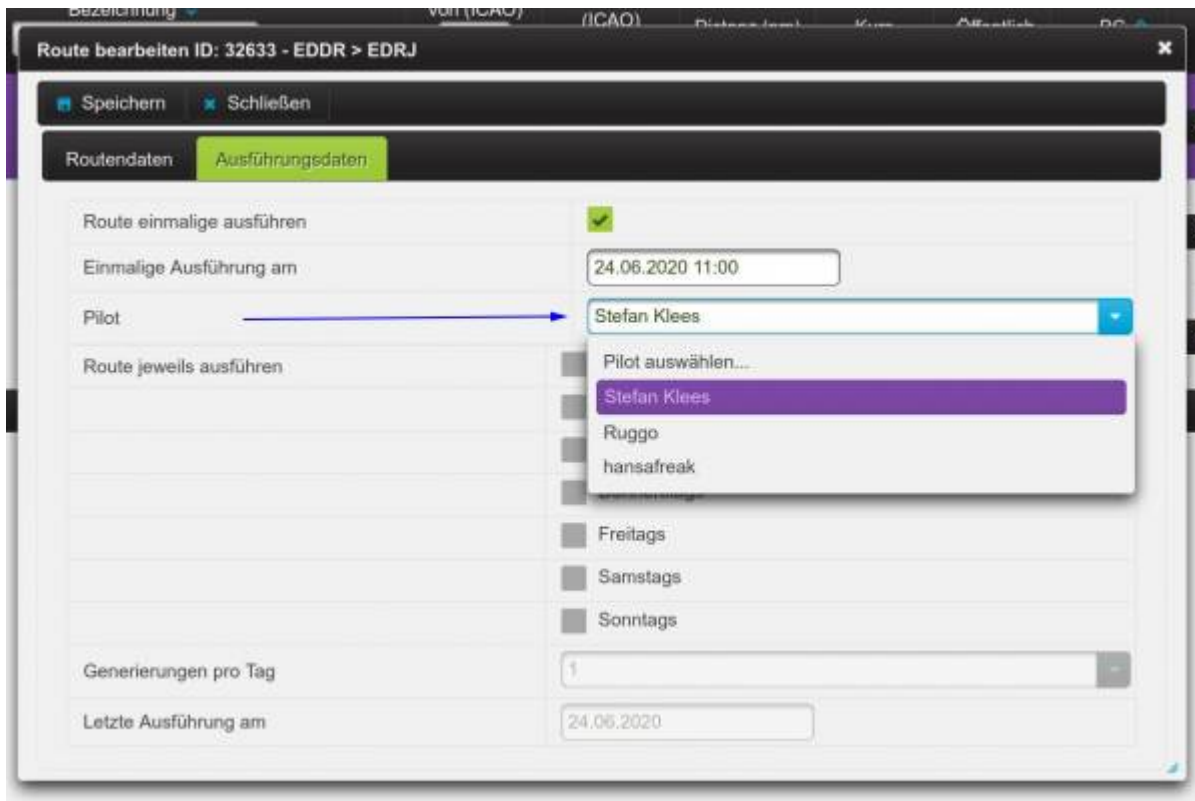


To provide more flexibility for airline pilots, a schedule route can be assigned to a pilot. These routes can be executed by the pilot himself if he has time to fly. After the scheduled route has been executed, it is automatically deactivated and the orders generated are in the pilot's order book in the waiting hall. The pilot can reactivate this route at any time to generate new orders for this route.

The airline should only allow reliable pilots to use this form of order generation, a malicious pilot can do great harm to the airline using this function.

Assigning a pilot is quite easy, the selection box contains all pilots of the airline:



then save the route and set the route to deactivated.

If the assignment of a pilot is to be removed, select "No Pilot".



After saving, the routes are available to the pilots under Statistics, My reserved routes, Memberships.



Last update: 2020/06/24 13:57 en:handbuch_airlines:terminrouten_fuer_piloten https://wiki.ftw-sim.de/doku.php?id=en:handbuch_airlines:terminrouten_fuer_piloten

From: <https://wiki.ftw-sim.de/> - FTWiki - das FTW Wiki

Permanent link: https://wiki.ftw-sim.de/doku.php?id=en:handbuch_airlines:terminrouten_fuer_piloten

Last update: **2020/06/24 13:57**

